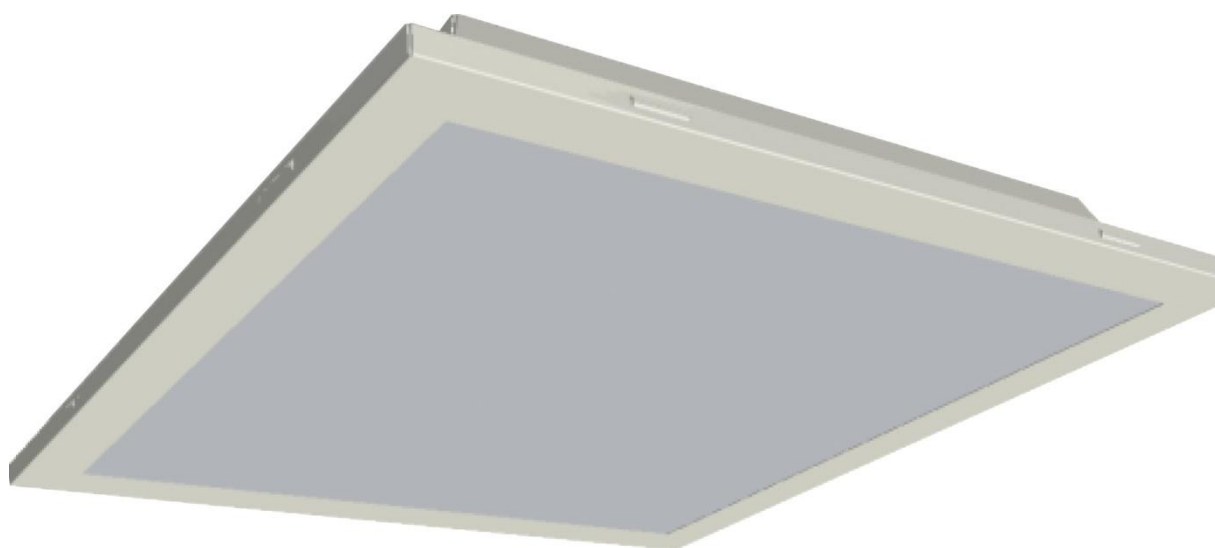


## PANEL LIGHT V3



# VESTEL

LED LIGHTING

## PRODUCT TECHNICAL INFORMATION Panel Light 60x60cm 23W

| PRODUCT SPECIFICATION      |                   |                   |                   |
|----------------------------|-------------------|-------------------|-------------------|
| Colour Description         | Warm White        | Neutral White     | Cool White        |
| CCT                        | 3000K             | 4000K             | 6500K             |
| Luminous Flux              | 3000 lm $\pm$ 15% | 3000 lm $\pm$ 15% | 3000 lm $\pm$ 15% |
| Rated Power                | 23W               | 23W               | 23W               |
| CRI                        | $\geq$ 80         | $\geq$ 80         | $\geq$ 80         |
| Efficacy of Luminaire      | 130 lm/W          | 130 lm/W          | 130 lm/W          |
| Beam Angle of Luminaire    | 110°              |                   |                   |
| Unified Glare Ratio (UGR)  | $\leq$ 24         |                   |                   |
| Dimming                    | Optional (1-10V)  |                   |                   |
| Emergency                  | Optional (+3W)    |                   |                   |
| Flicker Free               | Optional          |                   |                   |
| Rated Life Time            | 50,000 hours      |                   |                   |
| Operated Temperature       | 0°C – +40°C       |                   |                   |
| Humidity (Relative)        | 85%               |                   |                   |
| IP                         | 20                |                   |                   |
| ELECTRICAL SPECIFICATION   |                   |                   |                   |
| Number of Power Supplies   | 1 for 1 product   |                   |                   |
| Input Voltage (Vac)        | 220 ~ 240Vac      |                   |                   |
| Output Voltage (Vdc)       | 18V - 44V         |                   |                   |
| Output Current (Idc)       | 900mA $\pm$ 5%    |                   |                   |
| Frequency (Hz)             | 50 ~ 60Hz         |                   |                   |
| Operating Mode             | Constant Current  |                   |                   |
| Power Factor               | PF > 0,9          |                   |                   |
| MECHANICAL SPECIFICATION   |                   |                   |                   |
| Dimensions (LxWxH)         | 595*595*67 mm     |                   |                   |
| Weight                     | 5.2 kg            |                   |                   |
| Packaging Type             | Outbox            |                   |                   |
| Package Dimensions (LxWxH) | 660*680*145 mm    |                   |                   |
| Box                        | CP DOPEL WAVE     |                   |                   |
| Quantity in a Box          | 1                 |                   |                   |

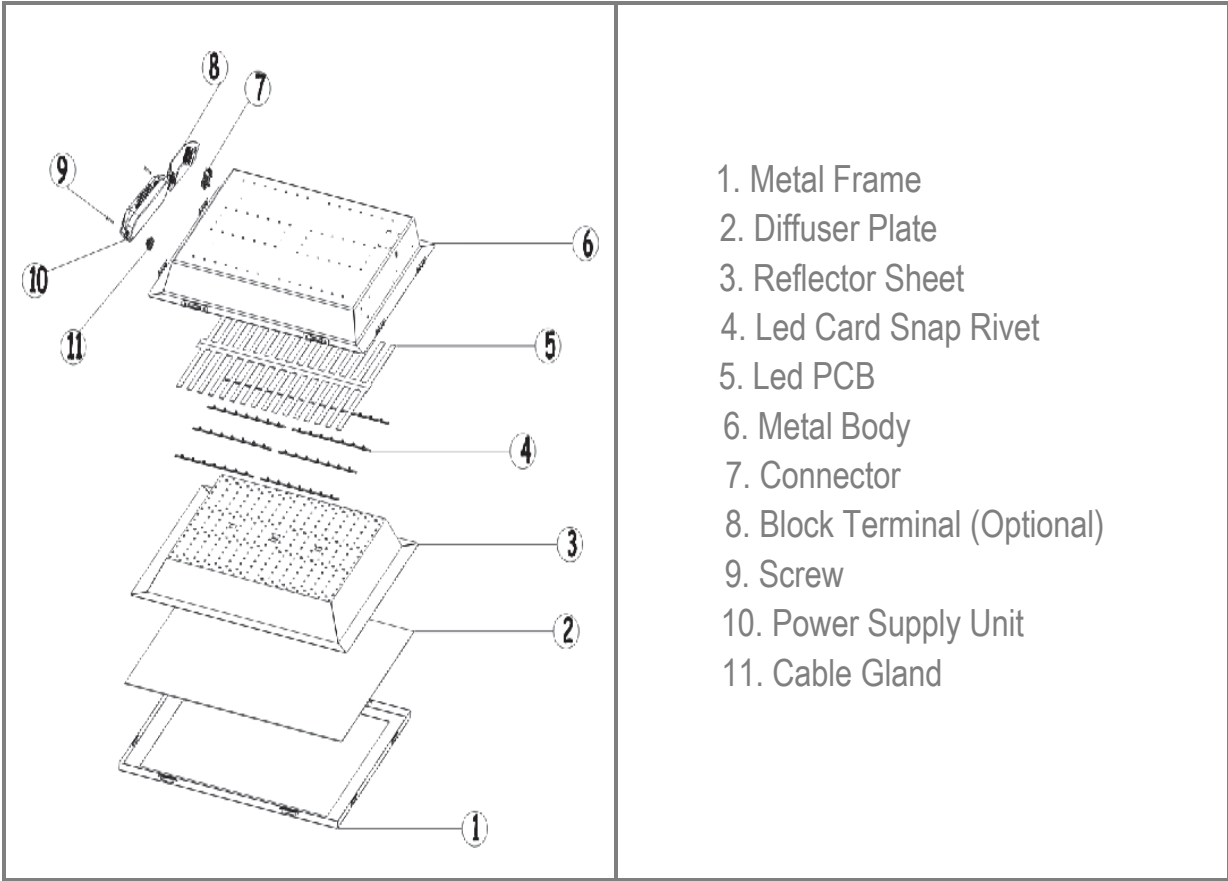
PRODUCT TECHNICAL INFORMATION Panel Light 60x60cm 27W

| PRODUCT SPECIFICATION      |                  |               |               |
|----------------------------|------------------|---------------|---------------|
| Colour Description         | Warm White       | Neutral White | Cool White    |
| CCT                        | 3000K            | 4000K         | 6500K         |
| Luminous Flux              | 3400 lm ± 15%    | 3400 lm ± 15% | 3400 lm ± 15% |
| Rated Power                | 27W              | 27W           | 27W           |
| CRI                        | ≥ 80             | ≥ 80          | ≥ 80          |
| Efficacy of Luminaire      | 125 lm/W         | 125 lm/W      | 125 lm/W      |
| Beam Angle of Luminaire    | 110°             |               |               |
| Unified Glare Ratio (UGR)  | ≤ 25             |               |               |
| Dimming                    | Optional (1-10V) |               |               |
| Emergency                  | Optional (+3W)   |               |               |
| Flicker Free               | Optional         |               |               |
| Rated Life Time            | 50,000 hours     |               |               |
| Operated Temperature       | 0°C – +40°C      |               |               |
| Humidity (Relative)        | 85%              |               |               |
| IP                         | 20               |               |               |
| ELECTRICAL SPECIFICATION   |                  |               |               |
| Number of Power Supplies   | 1 for 1 product  |               |               |
| Input Voltage (Vac)        | 220 ~ 240Vac     |               |               |
| Output Voltage (Vdc)       | 12V - 36V        |               |               |
| Output Current (Idc)       | 1050mA ± 5%      |               |               |
| Frequency (Hz)             | 50 ~ 60Hz        |               |               |
| Operating Mode             | Constant Current |               |               |
| Power Factor               | PF > 0,85C       |               |               |
| MECHANICAL SPECIFICATION   |                  |               |               |
| Dimensions (LxWxH)         | 595*595*67mm     |               |               |
| Weight                     | 5.1 kg           |               |               |
| Packaging Type             | Outbox           |               |               |
| Package Dimensions (LxWxH) | 700*700*120mm    |               |               |
| Box                        | CP DOPEL WAVE    |               |               |
| Quantity in a Box          | 1                |               |               |

PRODUCT TECHNICAL INFORMATION Panel Light 60x60cm UGR 27W

| PRODUCT SPECIFICATION      |                   |                   |                   |
|----------------------------|-------------------|-------------------|-------------------|
| Colour Description         | Warm White        | Neutral White     | Cool White        |
| CCT                        | 3000K             | 4000K             | 6500K             |
| Luminous Flux              | 3400 lm $\pm$ 15% | 3400 lm $\pm$ 15% | 3400 lm $\pm$ 15% |
| Rated Power                | 27W               | 27W               | 27W               |
| CRI                        | $\geq$ 80         | $\geq$ 80         | $\geq$ 80         |
| Efficacy of Luminaire      | 125 lm/W          | 125 lm/W          | 125 lm/W          |
| Beam Angle of Luminaire    | 80°               |                   |                   |
| Unified Glare Ratio (UGR)  | $\leq$ 20         |                   |                   |
| Dimming                    | Optional (1-10V)  |                   |                   |
| Emergency                  | Optional (+3W)    |                   |                   |
| Flicker Free               | Optional          |                   |                   |
| Rated Life Time            | 50,000 hours      |                   |                   |
| Operated Temperature       | 0°C – +40°C       |                   |                   |
| Humidity (Relative)        | 85%               |                   |                   |
| IP                         | 20                |                   |                   |
| ELECTRICAL SPECIFICATION   |                   |                   |                   |
| Number of Power Supplies   | 1 for 1 product   |                   |                   |
| Input Voltage (Vac)        | 220 ~ 240Vac      |                   |                   |
| Output Voltage (Vdc)       | 12V - 36V         |                   |                   |
| Output Current (Idc)       | 1050mA $\pm$ 5%   |                   |                   |
| Frequency (Hz)             | 50 ~ 60Hz         |                   |                   |
| Operating Mode             | Constant Current  |                   |                   |
| Power Factor               | PF > 0,85C        |                   |                   |
| MECHANICAL SPECIFICATION   |                   |                   |                   |
| Dimensions (LxWxH)         | 595*595*67mm      |                   |                   |
| Weight                     | 5.1 kg            |                   |                   |
| Packaging Type             | Outbox            |                   |                   |
| Package Dimensions (LxWxH) | 700*700*120mm     |                   |                   |
| Box                        | CP DOPEL WAVE     |                   |                   |
| Quantity in a Box          | 1                 |                   |                   |

EXPLODED VIEW OF THE PRODUCT



| CONTAINER INFORMATION |          |          |        |                        |
|-----------------------|----------|----------|--------|------------------------|
| 20" FEET              | 40" FEET | 40" FEET |        |                        |
| 384 pcs.              | 768 pcs. | 768 pcs. |        |                        |
| PALETTE DIMENSIONS    |          |          |        |                        |
| LENGHT                | WIDTH    | HEIGHT   | WEIGHT | PACKAGE ON THE PALETTE |
| 140cm                 | 110cm    | 217cm    |        | 48                     |